

Sigurd Fischer Photo



Philip Fein Photo

Joseph W. Molitor Photo



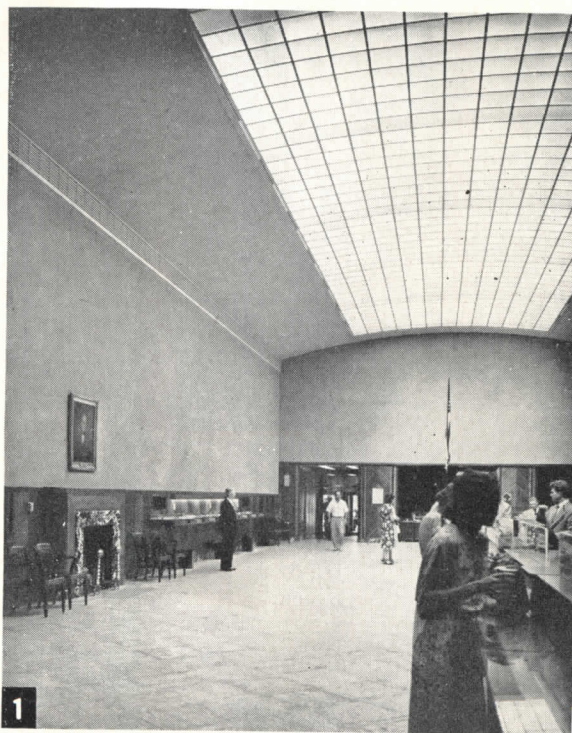
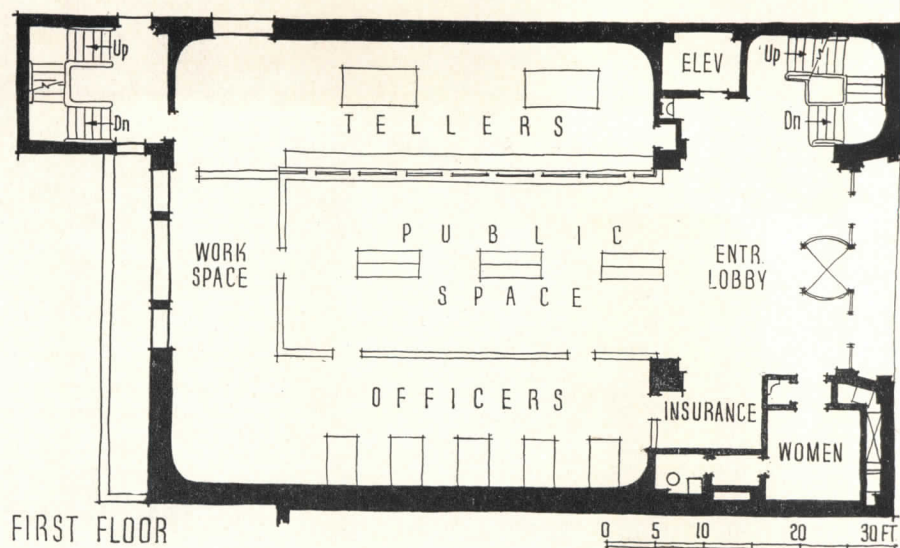
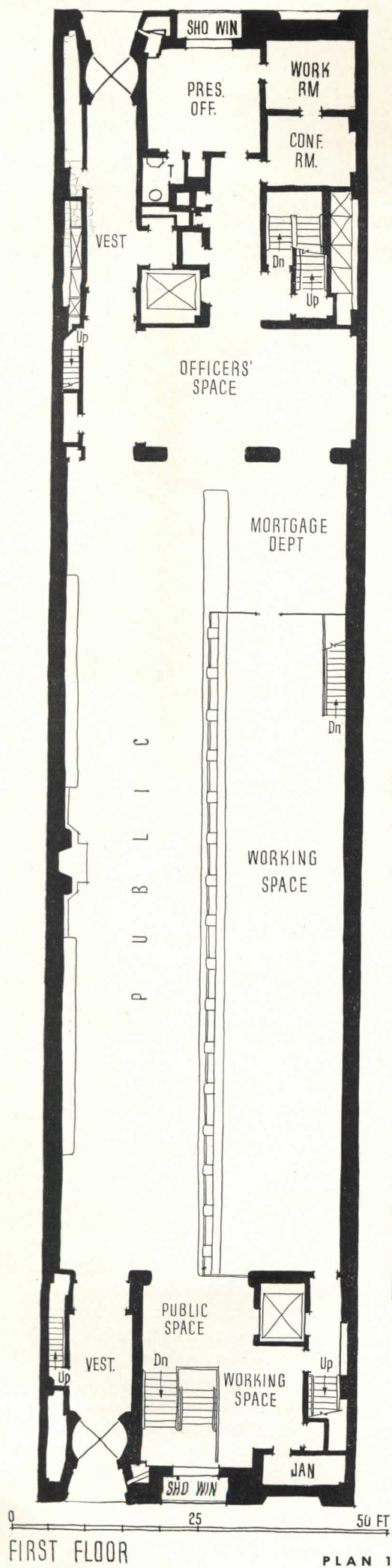
A COMPARATIVE GLANCE AT THREE NEW BANKS

1. *People's Savings Bank*
Providence, Rhode Island
Cram & Ferguson, Architects-Engineers
2. *Central Branch, Continental Bank & Trust Co.*
Salt Lake City, Utah
Snedaker & Macdonald, Architects
3. *Broadway Savings Bank*
New York City
Harold R. Sleeper, Architect
Ackerman & Ramsey, Associates

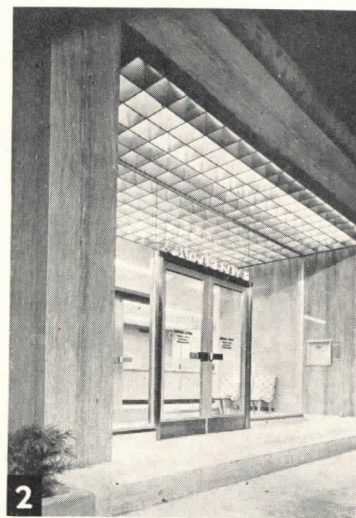
NOT SO LONG AGO the emphasis in bank design was on the monumental facade and the lofty interior considered essential to impress the general public with the institution's solidity. Banks were cold, unfriendly, over-ornamental, and quite frequently impractical from the public's point of view.

In recent years there has been a strong trend away from that old tradition. The banks being built today are straightforward expressions of their function; they are out not to impress the public but to attract it.

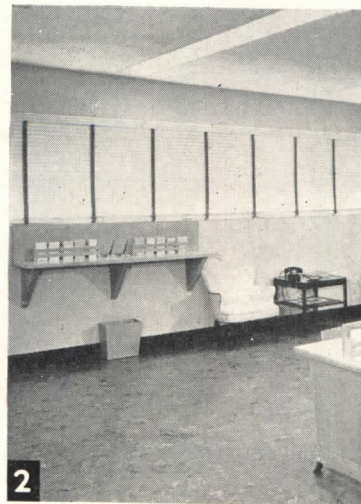
The three banks shown above and on the following six pages are far apart geographically. They are quite different in shape and size. Yet all three have treated their public areas, safe deposit facilities, and general working arrangements in much the same way. For purposes of comparison, they are shown here as a unit.



Sigurd Fischer Photo



Philip Fein Photos





3

Joseph W. Molitor Photo

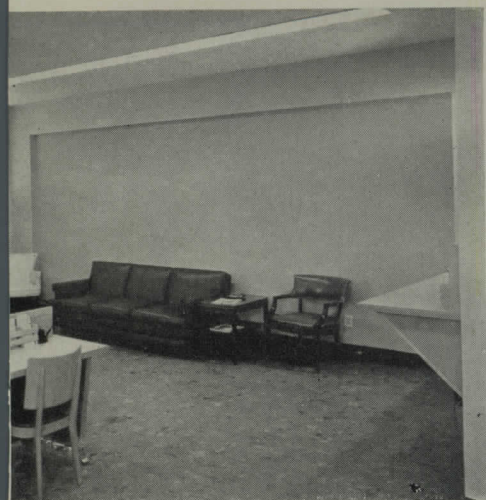
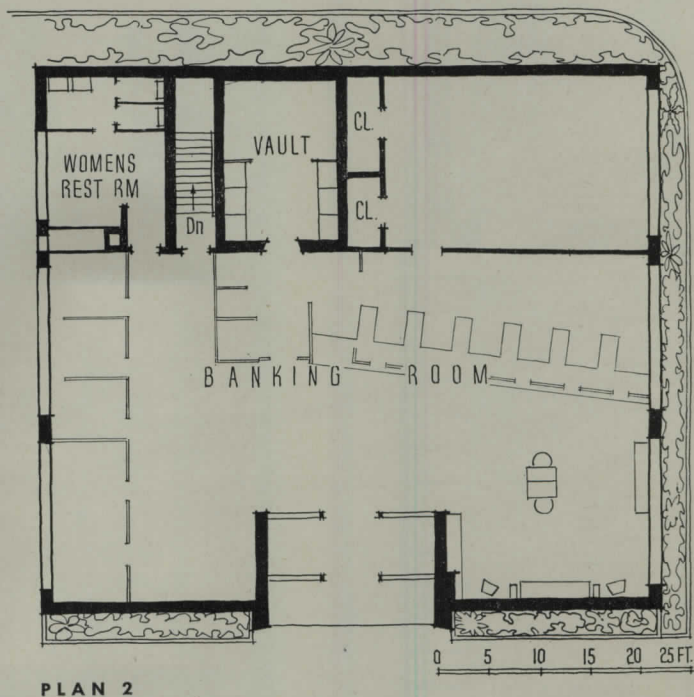
THREE NEW BANKS: PUBLIC SPACE

Despite the difference in overall shape of these three banks, each has a more-or-less rectangular public area, visible in its entirety from the main entrance. There is no island of tellers' cages around which the customer must play hide-and-seek, but instead a neat row of tellers' windows ranged along one side. Grille work is happily missing. Lighting is good, public desk and waiting space is convenient, ceilings are acoustically treated. Access to all facilities is obvious and easy. Of particular note are the skylighted ceiling of the People's Savings Bank (1) and the angled tellers' desks of the Continental Bank & Trust Co. (2).

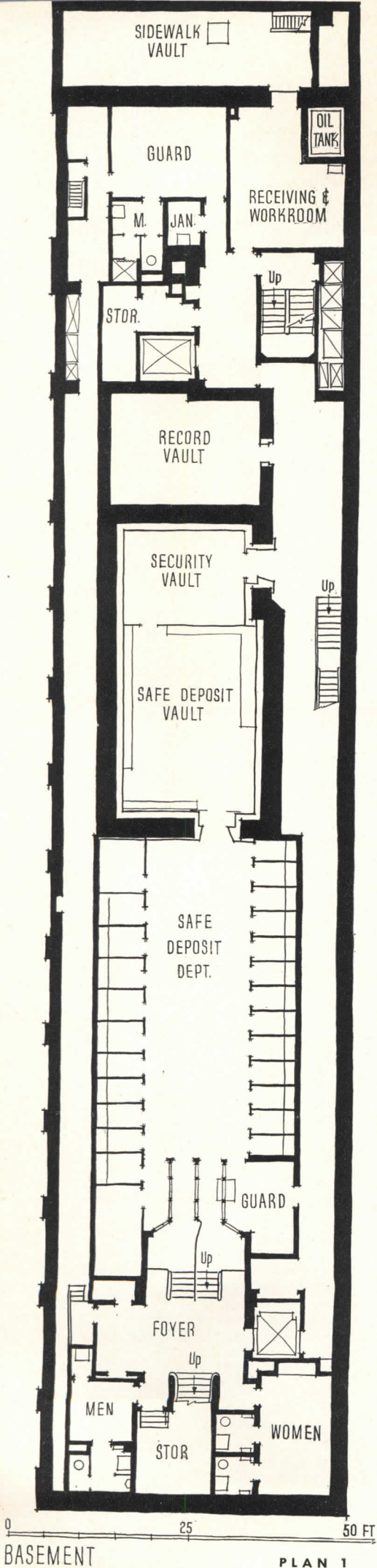
1. *People's Savings Bank*

2. *Continental Bank & Trust Co.*

3. *Broadway Savings Bank*



2



Because Providence has had several severe floods in the past (the 1938 hurricane caused a great deal of flood damage), special precautions were taken in the design of the People's Savings Bank (1). The architects describe the lower portion of the building as a heavy waterproof concrete box extending well above flood level. The four openings in the walls of the "box" — a show window and a door on each street front — are equipped with water-tight doors which are closed after banking hours or in case of flood. Each entrance doorway also has a low portable metal dam for use in case of shallow street floods, to protect the building and still permit access to it.

Should water seep in despite all these precautions, it would drain into a pit in the sub-basement and be removed by a waterproof electric pump capable of handling 250 gpm. A larger pump, with a capacity of 600 gpm, would go into action automatically if the smaller one should be overtaxed. The building has an emergency power plant on the 6th floor to provide power if the usual sources should fail.

2



1

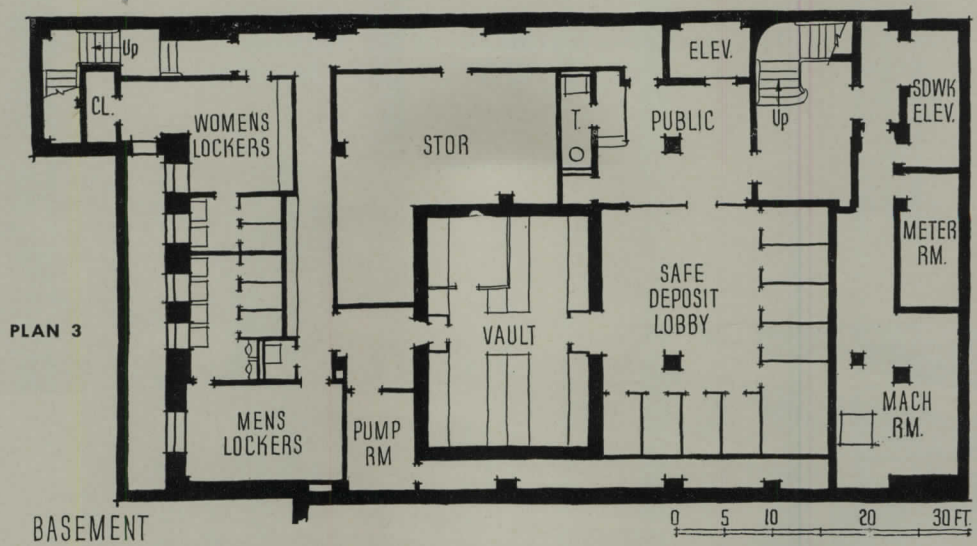
Sigurd Fischer Photo



Philip Fein Photo

THREE NEW BANKS:
SAFE DEPOSIT FACILITIES

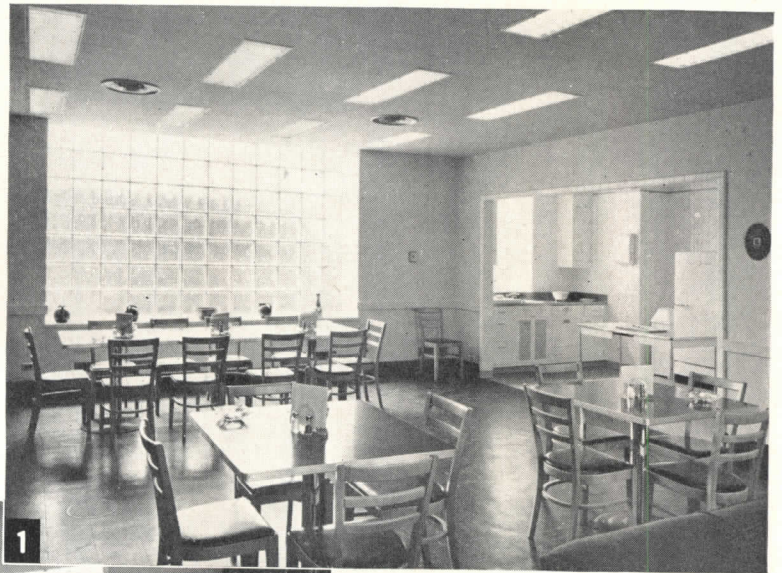
1. *People's Savings Bank*
2. *Continental Bank & Trust Co.*
3. *Broadway Savings Bank*



THREE NEW BANKS: WORKING SPACE

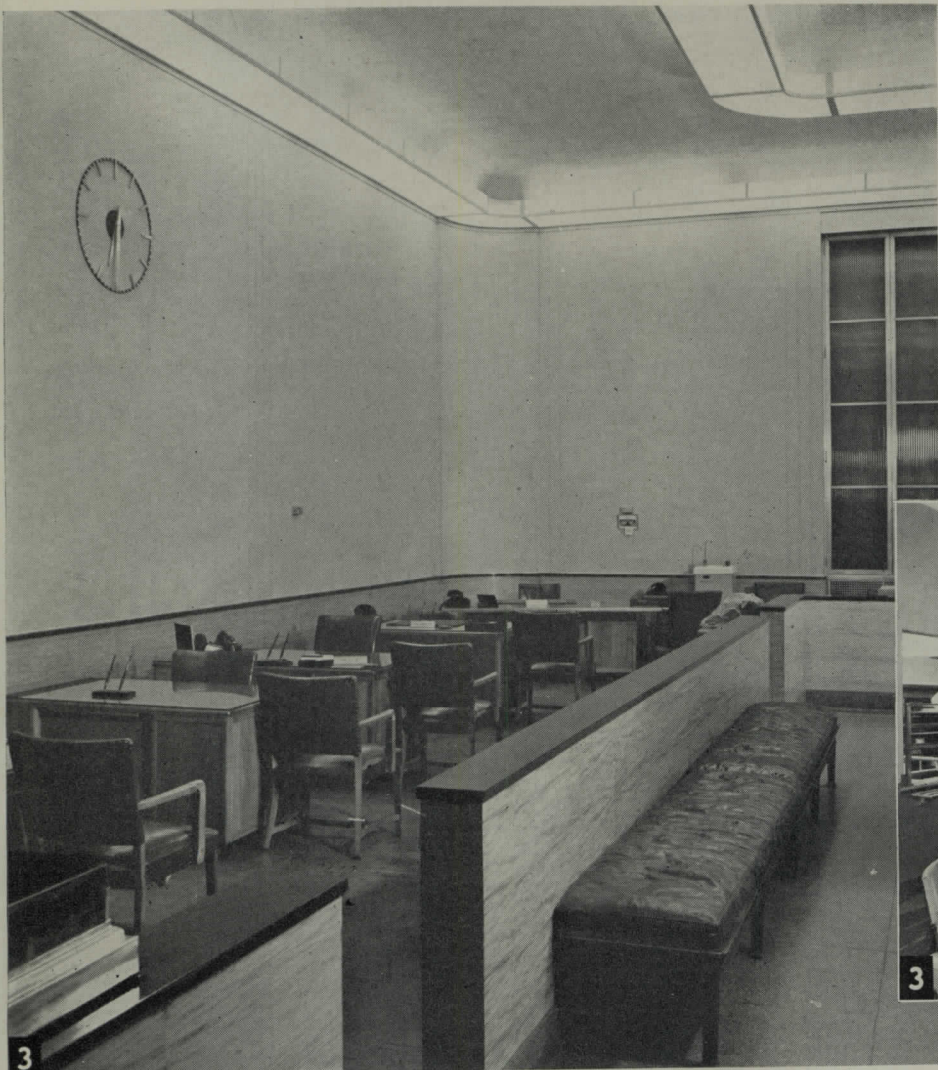
Space allotted to bank employees has been carefully worked out in all three plans. Both of the larger buildings (1, 3) have well-lighted and pleasantly decorated employee dining rooms and kitchens on upper floors. All three banks have easy access from public to working areas, and conveniently placed officers' platforms. The smallest of the trio (2) has a compact built-in tellers' area.

1. People's Savings Bank



Sigurd Fischer Photos





3. Broadway Savings Bank



Joseph W. Molitor Photos

**2. Continental Bank
& Trust Co.**



Philip Fein Photo