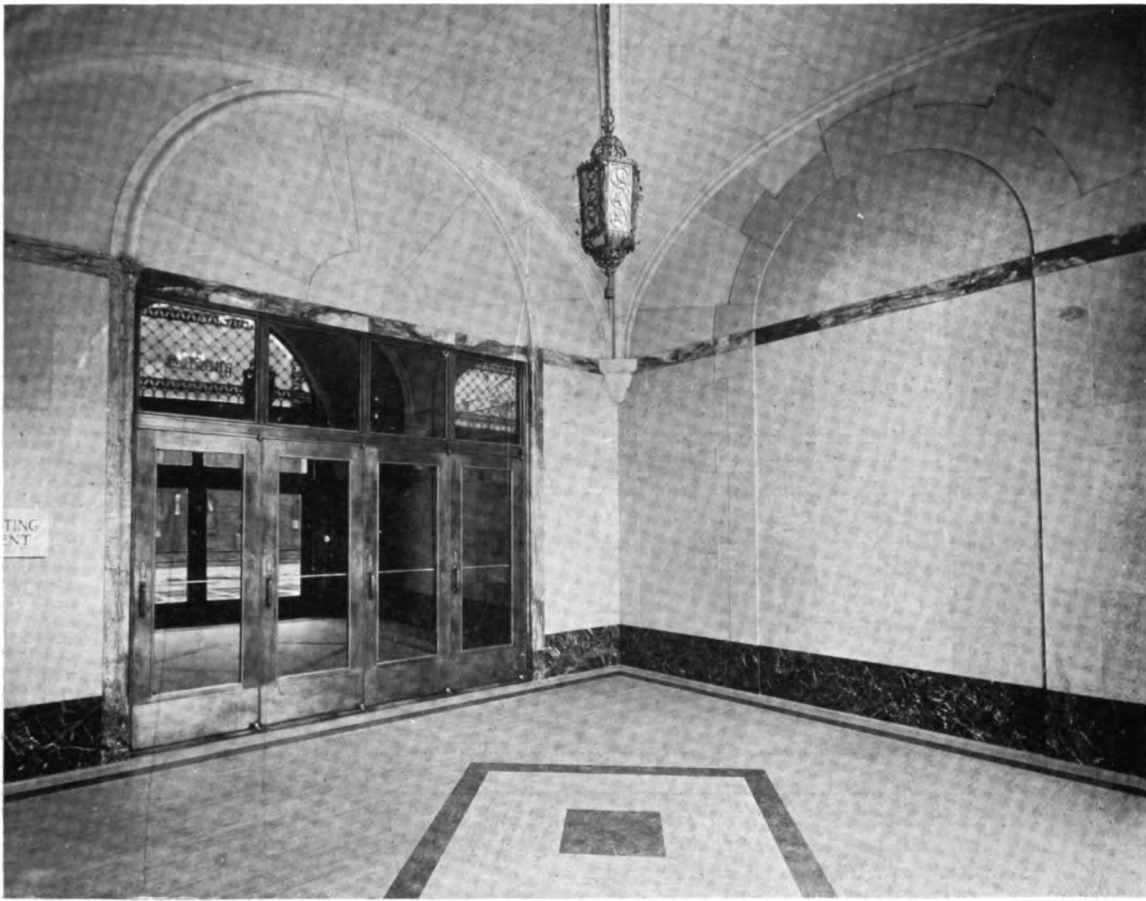


PENNSYLVANIA BUILDING, 225 WEST 34TH STREET,  
NEW YORK CITY.

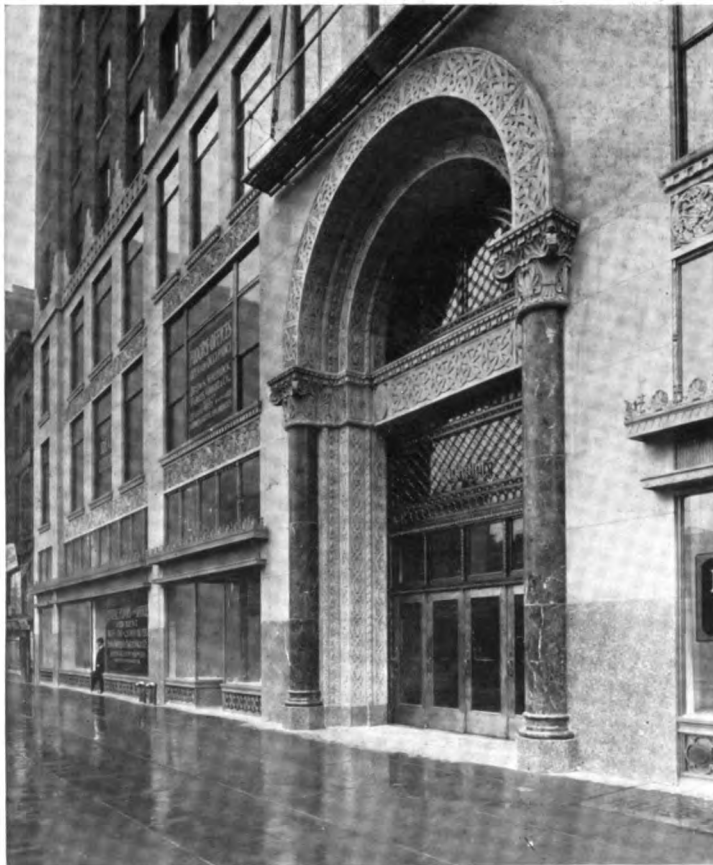
Schwartz & Gross, Architects.

ARCHITECTURE AND BUILDING. Plate 109.  
Built by Julius Tishman & Sons, Inc.; hardware—Norwalk Lock Co.; glass—Joseph  
Elias & Co., Inc.; automatic sprinkler system—Raisler Sprinkler Co.—advertisement.



HALLWAY VIEW.

DETAIL OF EXTERIOR, PENNSYLVANIA BUILDING, 225 WEST 34TH STREET, NEW YORK CITY.  
Schwartz & Gross, Architects.



ARCHITECTURE AND BUILDING. Plate 110.  
Electrical contractors—Jandous Electric Equipment Co.; lighting fixtures—Kanne & Bessant, Inc.; interior marble—Voska, Foelsch & Sidlo, Inc.; elevators—A. B. See Elevator Co., Inc.; heating system—Raisler Heating Co.; ornamental iron and cast iron work—Madison Iron Works; plastering work—Frank Morell Co., Inc.—advertisement.