



NEW HOME OFFICE BUILDING OF THE EQUITABLE LIFE ASSURANCE SOCIETY OF THE UNITED STATES, 393 SEVENTH AVENUE, NEW YORK CITY.

Starrett & Van Vleck, Architects.

ARCHITECTURE AND BUILDING. Plate 99.

Built by Thompson Starrett Co.; painting and decorating—W. P. Nelson Co.; structural steel—American Bridge Co.; brick—American Enameled Brick & Tile Co.; Lafarge non-staining cement used; cast aluminum roof drains—Superior Skylight Co.; cement floors and walks—Washington Concrete Corporation; automatic sprinkler valve alarm service—American District Telegraph Co.—advertisement.



MAIN HALLWAY NEW HOME OFFICE BUILDING OF THE EQUITABLE
LIFE ASSURANCE SOCIETY OF THE UNITED STATES, 393 SEVENTH
AVENUE, NEW YORK CITY.

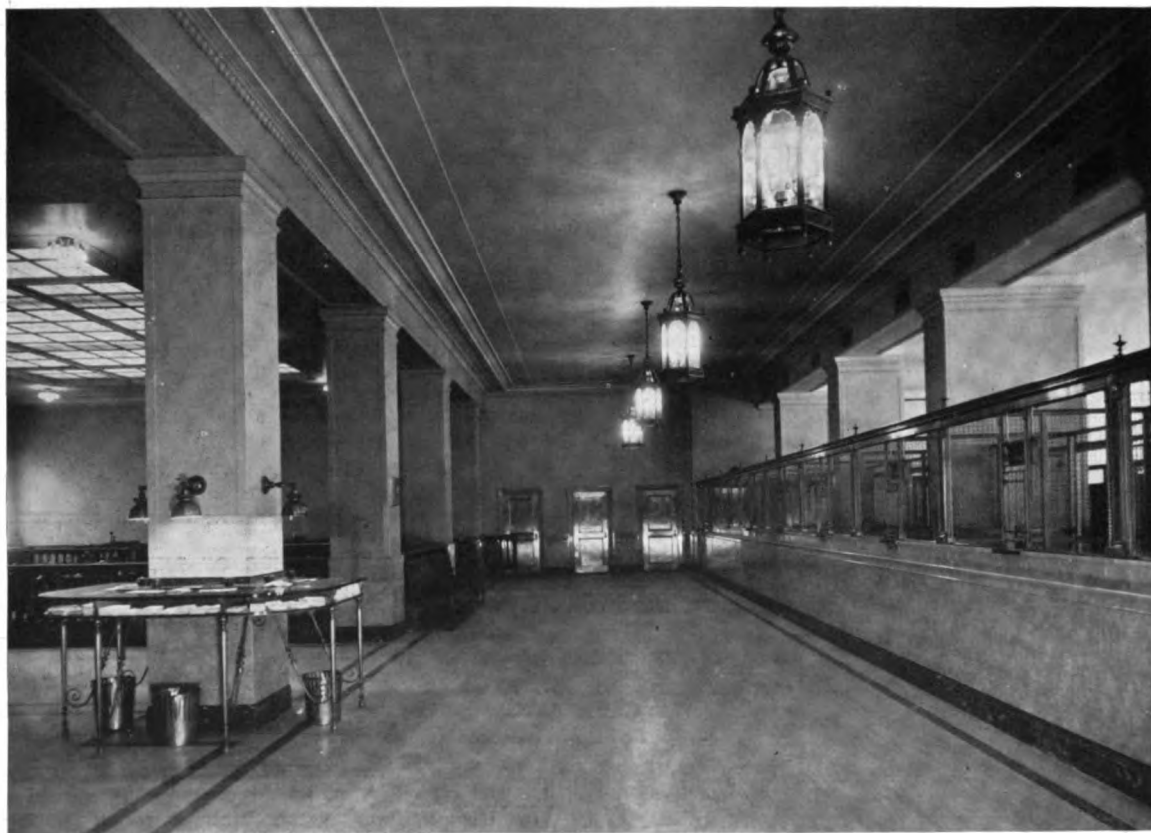
Starrett & Van Vleck, Architects.

ARCHITECTURE AND BUILDING. Plate 100.

Lighting fixtures—Robert Phillips Co., Inc.; metal furring, lathing and plastering—
James J. Conroy & Sons, Inc.; painting and decorating—W. P. Nelson Co.; lighting
fixture, glassware—Gillinder & Sons, Inc.; elevators—Gurney Elevator Co.—
advertisement.



32ND STREET CORRIDOR



OFFICES OF EQUITABLE LIFE ASSURANCE SOCIETY OF THE
UNITED STATES, 393 SEVENTH AVENUE, NEW YORK CITY.
Starrett & Van Vleck, Architects.

ARCHITECTURE AND BUILDING. Plate 101.

Built by Thompson-Starrett Co.; vault engineer—Frederick S. Holmes; bank vault
—Remington & Sherman Co.; office chairs—The Sikes Co.—advertisement.



DIRECTORS' ROOM.



ASSEMBLY ROOM, NEW HOME OFFICE BUILDING OF THE EQUITABLE LIFE ASSURANCE SOCIETY OF THE UNITED STATES, 393 SEVENTH AVENUE, NEW YORK CITY.

Starrett & Van Vleck, Architects.

ARCHITECTURE AND BUILDING. Plate 102.
Woodwork—The Batavia and New York Woodworking Co.; lighting fixtures—
Robert Phillips Co.; painting and decorating—W. P. Nelson Co.—advertisement.